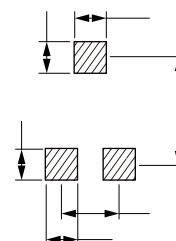
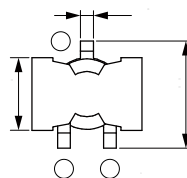
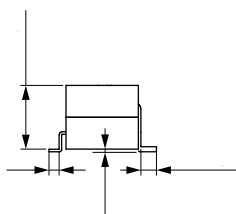
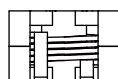
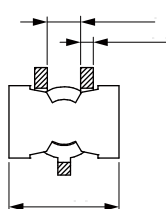


- High saturation current up to 100A
- Low losses with flat wire design
- Low core losses with MnZn core material
- Quantity: 100pcs

- High current DC/DC converter
- LC filter



Part No	Inductance	Tolerance	Temperature Rise Current Typ.	Current Typ.	DC Resistance Typ.	DC Resistance Max.
THC2015-2R2M	2.20	±20%	28.0	55.0	1.70	2.20
THC2015-2R7M	2.70	±20%	28.0	48.0	1.70	2.20
THC2015-3R3M	3.30	±20%	24.0	48.0	3.28	3.80
THC2015-4R7M	4.70	±20%	24.0	35.0	3.28	3.80
THC2015-5R6M	5.60	±20%	24.0	30.0	3.28	3.80
THC2015-6R8M	6.80	±20%	18.0	34.0	6.60	7.30
THC2015-8R2M	8.20	±20%	18.0	29.0	6.60	7.30
THC2015-100M	10.0	±20%	18.0	23.0	6.60	7.30
THC2015-150M	15.0	±20%	16.0	18.0	8.60	9.50
THC2015-220M	22.0	±20%	16.0	13.0	8.60	9.50
THC2015-330M	33.0	±20%	16.0	9.00	8.60	9.50
THC2015-470M	47.0	±20%	13.0	7.00	12.3	15.0

Operating Temperature: -40°C to +125°C

Temperature Rise Current: the actual value of DC current when the temperature rise is T40°C

Saturation Current that will cause initial inductance to drop approximately 20%

