

NRSE Series

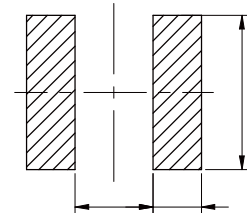
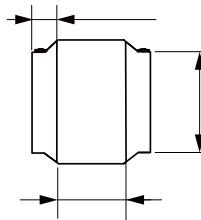
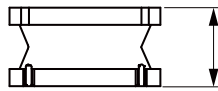
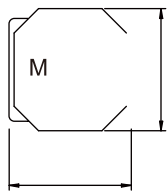


CHARACTERISTICS

- Magnetic resin for higher current and semi-magnetically shielded
- Quantity: 700pcs

APPLICATION

- DC/DC converter
- LC filter



Part No	Inductance @100KHz/0.25V (μ H)	Tolerance	Saturation current (A)	Temperature Rise Current (A)	DC Resistance $\pm 30\%$ (Ω)
NRSE8065-4R7N	4.70	$\pm 30\%$	8.50	4.70	0.018
NRSE8065-6R8M	6.80	$\pm 20\%$	7.60	4.30	0.026
NRSE8065-100M	10.0	$\pm 20\%$	6.60	4.00	0.033
NRSE8065-220M	22.0	$\pm 20\%$	4.30	2.80	0.054
NRSE8065-330M	33.0	$\pm 20\%$	3.60	2.00	0.083
NRSE8065-470M	47.0	$\pm 20\%$	2.85	1.80	0.135
NRSE8065-680M	68.0	$\pm 20\%$	2.50	1.50	0.181
NRSE8065-820M	82.0	$\pm 20\%$	2.30	1.40	0.215
NRSE8065-101M	100	$\pm 20\%$	2.00	1.30	0.250
NRSE8065-151M	150	$\pm 20\%$	1.60	1.00	0.360
NRSE8065-221M	220	$\pm 20\%$	1.30	0.90	0.528
NRSE8065-471M	470	$\pm 20\%$	1.00	0.55	1.300
NRSE8065-102M	1000	$\pm 20\%$	0.65	0.40	2.350
NRSE8065-222M	2200	$\pm 20\%$	0.45	0.27	5.000

Operating temperature: $-40^{\circ}\text{C} \sim +125^{\circ}\text{C}$

Temperature rise current: the actual value of DC current when the temperature rise is $\sim 40^{\circ}\text{C}$

Saturation Current that will cause initial inductance to drop approximately 30%