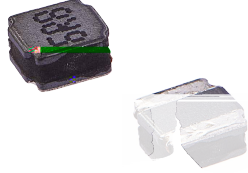


NRSE Series

SMD Shielded Tiny Power Inductor

Size 4018



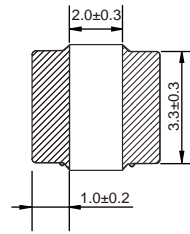
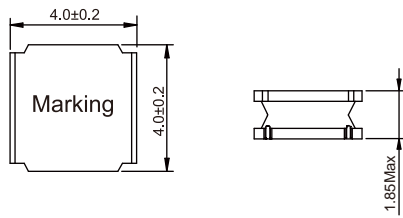
CHARACTERISTICS

-
-

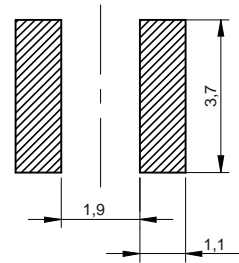
APPLICATION

-
-

Dimensions: [mm]



Land Pattern: [mm]



Electrical Properties:

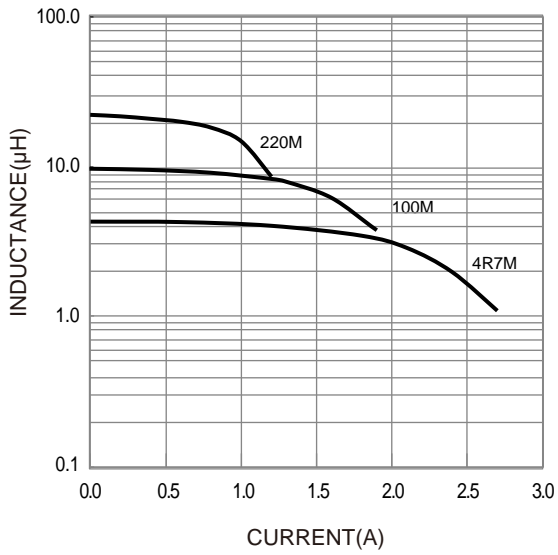
°C

°C

°C

Typical Electrical Characteristics:

Inductance VS. Current Characteristics:



Temperature Rise VS. Current Characteristics:

