

## NRSA Series

### FEATURES

- Magnetic shield type wound inductor for power circuits using a ferrite magnetic material
- High magnetic shield construction and compatible with high-density mounting
- Larger current and lower Rdc were achieved by optimizing the ferrite core figure.
- Operating temperature: -55 to +125°C(including self-temperature rise)
- AEC-Q200 qualified
- Quantity: 2000pcs

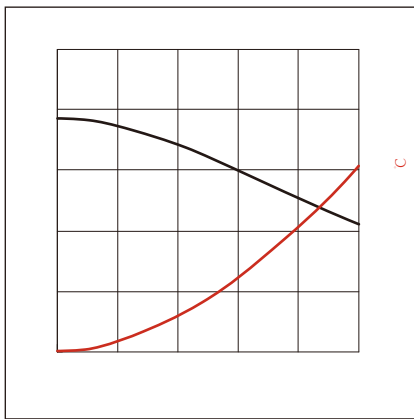
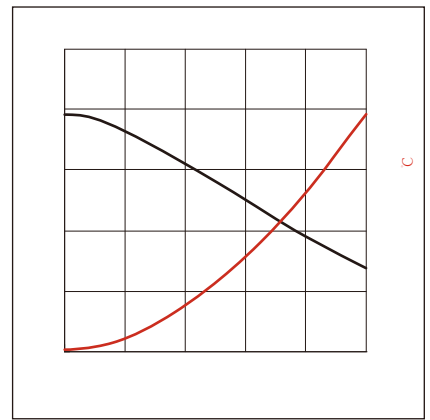
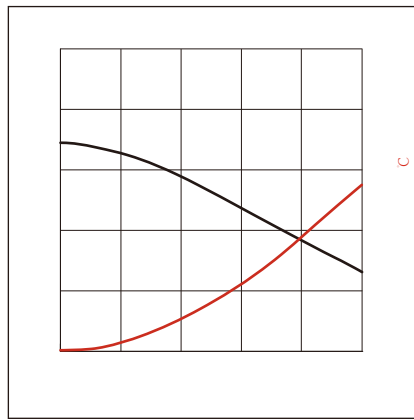
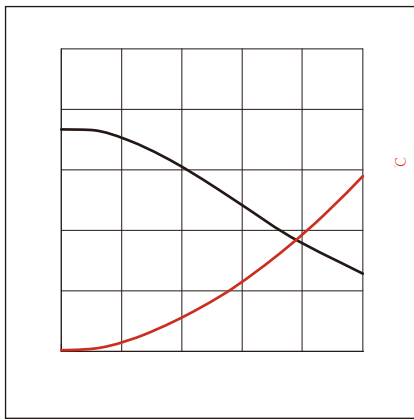
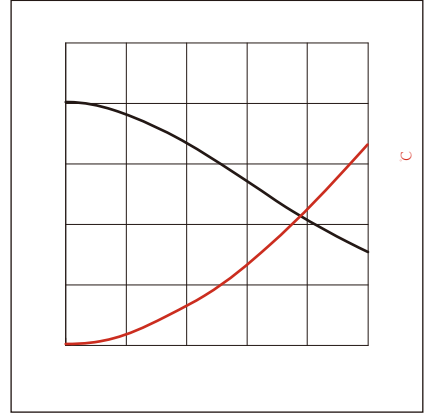
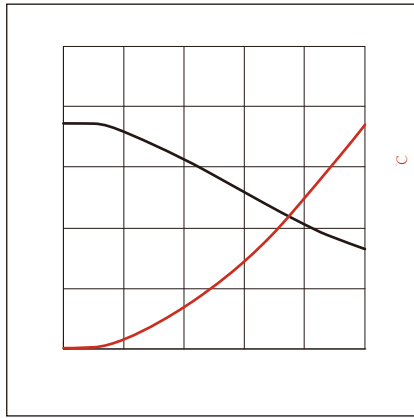
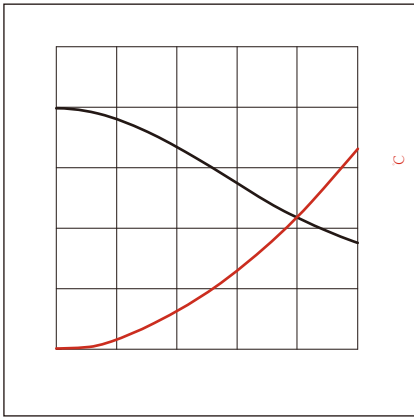
### APPLICATION

- 

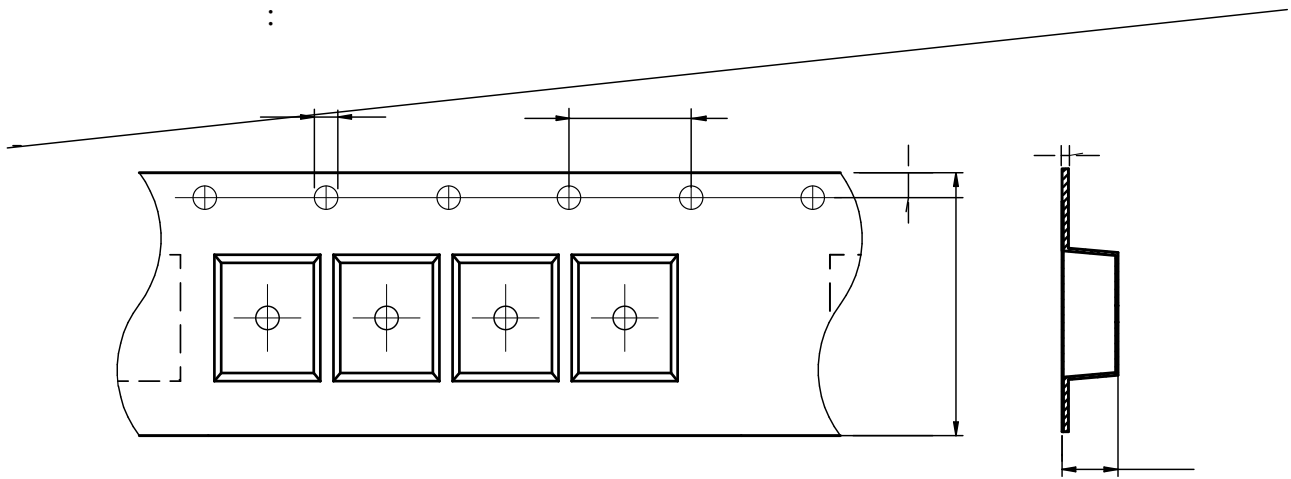


Part No	Inductance @ 100KHz/1V	Tolerance	Temperature Rise Current Max.	Current Max.	DC Resistance Typ.	DC Resistance Max.
NRSA3015-100M	10.0	±20%	1.30	0.90	220	264
NRSA3015-150M	15.0	±20%	1.00	0.72	310	372
NRSA3015-180M	18.0	±20%	0.92	0.65	380	456
NRSA3015-220M	22.0	±20%	0.85	0.59	450	540
NRSA3015-330M	33.0	±20%	0.75	0.51	780	940
NRSA3015-470M	47.0	±20%	0.60	0.41	1200	1440
NRSA3015-101M	100	±20%	0.35	0.30	3400	4080

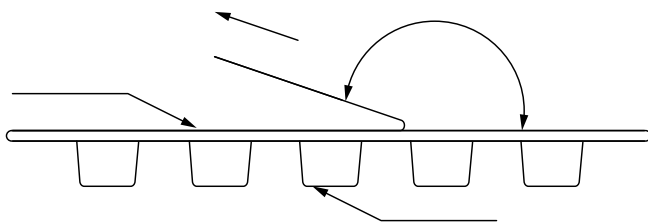




C  
C  
C

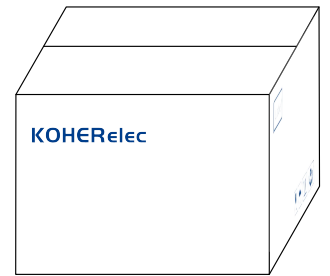
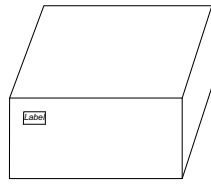
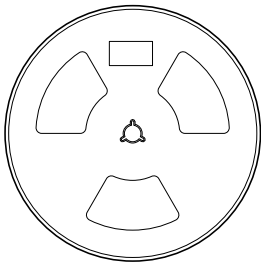
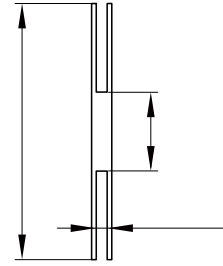
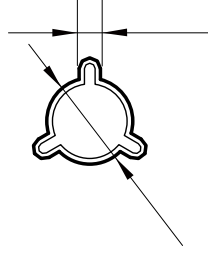
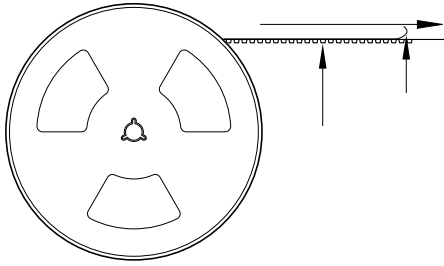


NRSA3015	3.4±0.1	3.4±0.1	1.5±0.1	4.0±0.1	4.0±0.1	8.0±0.3	1.7±0.1	1.75±0.1	0.23±0.1



The peel force of top cover tape shall be between 0.1 to 0.98 N

:



2000 Pcs/Reel

5 Reel /Inner box( 10K Pcs)

8 Inner box/Carton box(80K Pcs)

:

- 
- 
- 
- 
- 
- 
- 
- 
- 
-