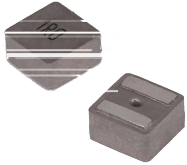


MDTE Series

Wire Wound Molded SMD Power Inductors

Size 1060



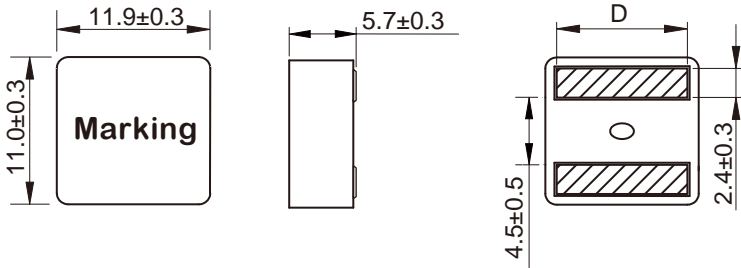
FEATURES

-
-
-
-
-
-
-

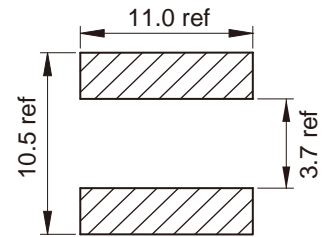
APPLICATION

-
-

Dimensions: [mm]



Land Pattern: [mm]



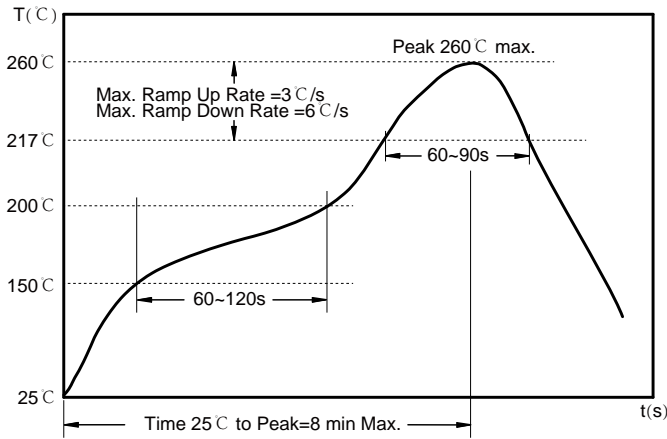
Electrical Properties:

	(μ H)		Satura on (A)	Satura on (A)	(A)	(m)	(mm)
,							
,							
,							
,							
,							
,							
,							

Saturation Current will cause L to drop approximately 30%

Temperature Rise Current: The actual value of DC current when the temperature rise is $\Delta T=40^{\circ}C$

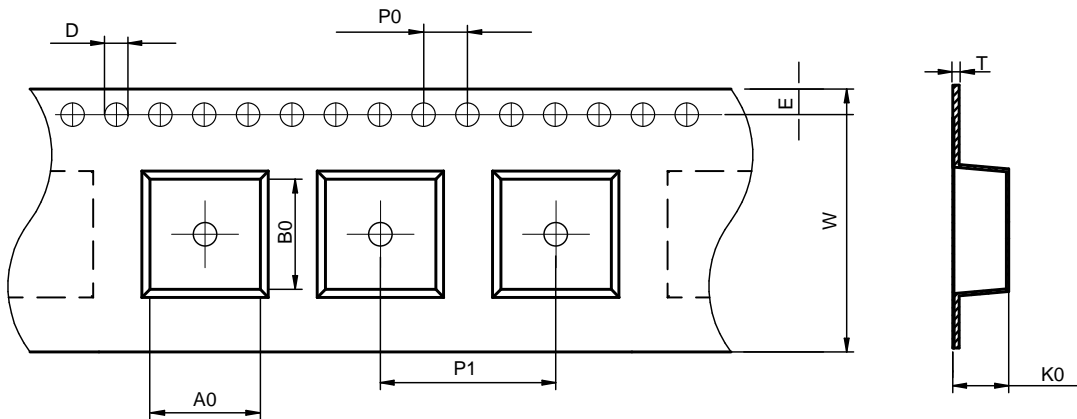
Soldering Reflow:



Preheat condition: 150 ~200°C / 60~120 sec.
 Allowed time above 217°C : 60~90 sec.
 Max temperature: 260°C .
 Max time at max temperature: 10 sec.
 Allowed Reflow time: 2x max.

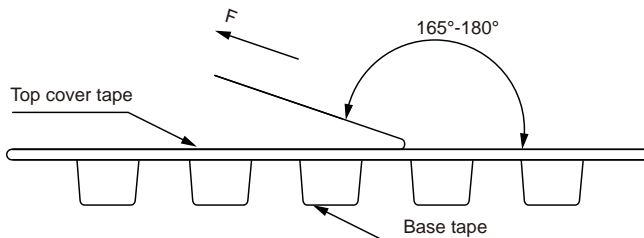
Packaging Information:

Tape Dimension :



Series	A0 (mm)	B0 (mm)	D (mm)	P0 (mm)	P1 (mm)	W (mm)	K0 (mm)	E (mm)	T (mm)
MDTE1060	12.4± 0.1	11.5± 0.1	1.5± 0.1	4.0± 0.1	16.0± 0.1	24.0± 0.3	6.3± 0.1	1.75± 0.1	0.35± 0.05

Peel force of top cover tape:



The peel force of top cover tape shall be between 0.1 to 1.3 N

Product Marking:

Marking	Printing Inductance)
---------	----------------------

Reel Dimension: [mm]



Packaging Quantity: