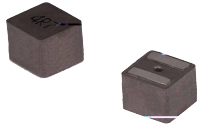


MDTA Series

Flat Wire Molded Inductor

Size 1513



FEATURES

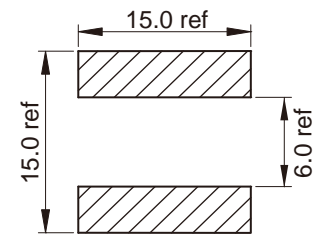
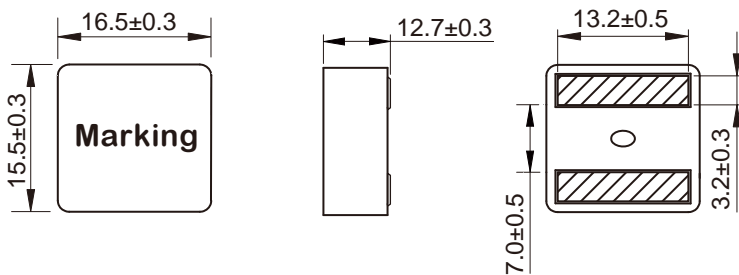
-
- #
- †
-
- # j
- \ C @
- j

APPLICATION

-) #) #
- Q) = @

Dimensions: [mm]

Land Pattern: [mm]

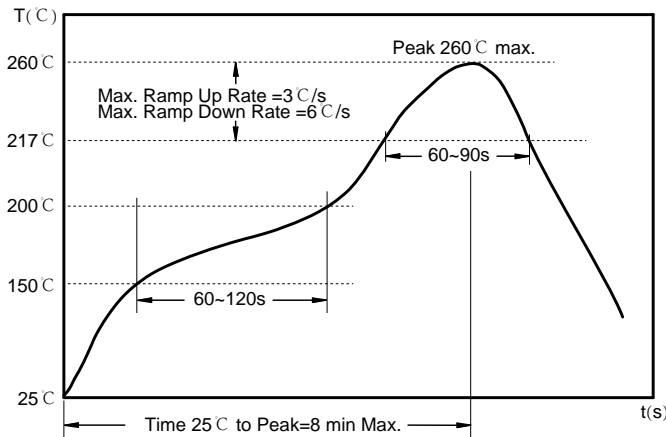


Electrical Properties:

U) u°	k U					
U) u°	k U					
U) u°	k U					
U) u°	k U					
U) u°	k U					
U) u°	U					
U) u°	U					
U) u°	U					
U) u°	U					

Saturation Current will cause L to drop approximately 30%
 Temperature Rise Current that causes the specified temperature rise from 25°C ambient.

Soldering Reflow:



Preheat condition: 150 ~200 °C / 60~120 sec.

Allowed time above 217 °C : 60~90 sec.

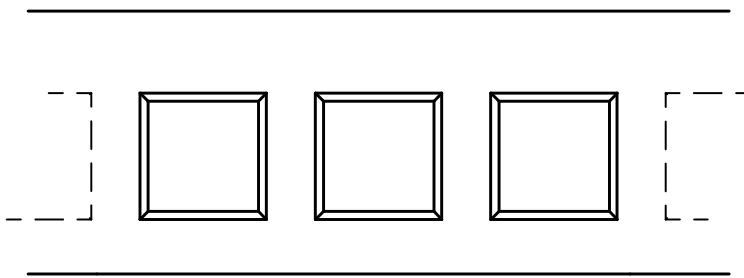
Max temperature: 260 °C .

Max time at max temperature: 10 sec.

Allowed Reflow time: 2x max.

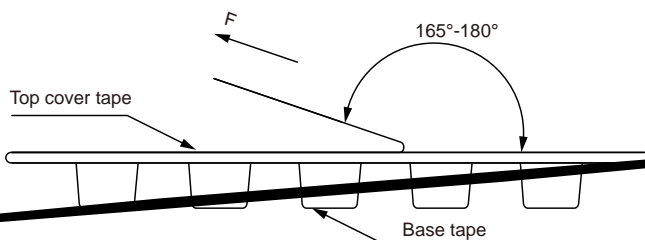
Packaging Information:

Tape Dimension :



Series	A0 (mm)	B0 (mm)	D (mm)	P0 (mm)	P1 (mm)	W (mm)	K0 (mm)	E (mm)	T (mm)
MDTA1513	17.0± 0.1	16.0± 0.1	1.5± 0.1	4.0± 0.1	24.0± 0.1	32.0± 0.3	13.6± 0.1	1.75± 0.1	0.50± 0.05

Peel force of top cover tape:



The peel force of top cover tape shall be between 0.1 to 1.3 N

Product Marking:

Marking	Printing Inductance)
---------	----------------------

Reel Dimension: [mm]



Packaging Quantity: