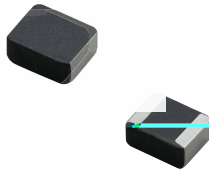


MDE Series

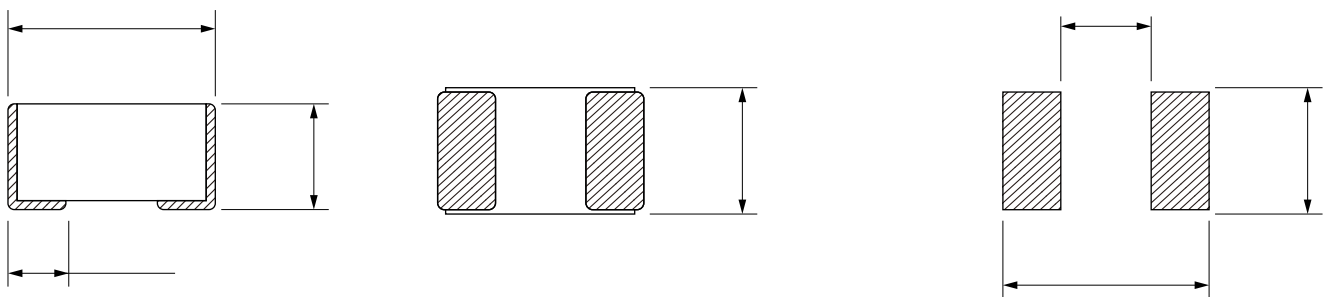


FEATURES

- High saturation current realized by material properties and structure design.
- Low DC resistance to achieve high conversion efficiency and lower temperature rising.
- Low Profile.
- Magnetically shielded structure to accomplish high resolution in EMC protection.
- Halogen free, Lead Free, RoHS Compliance.
- Quantity: 3000pcs

APPLICATION

- Generic in portable DC to DC converter line.
- Smart phone, PAD
- DC/DC converter
- Thin-type power supply module.



Part No	Inductance @ 1MHz/1V	Tolerance	DC Resistance Typ.	DC Resistance Max.	Current Typ.	Current Max.	Temperature Rise Current Typ.	Temperature Rise Current Max.
MDE201610S-R10M	0.1	±20%	7		12.2	11.0	9.5	9.0
MDE201610S-R33M	0.33	±20%			6.7	6.10	4.7	4.20
MDE201610S-R47M	0.47	±20%	23	30	6.1	5.30	4.5	4.10
MDE201610S-1R0M	1.0	±20%	48	60	3.9	3.30	3.2	3.00
MDE201610S-1R5M	1.5	±20%	86	99	3.4	3.10	2.4	2.20
MDE201610S-2R2M	2.2	±20%	117	140	2.6	2.45	2.2	2.00

Operating temperature range - 40 °C to + 125 °C

Temperature rising current will cause the coil temperature approximate $\Delta T 40^{\circ}\text{C}$

Saturation current will cause to drop approximately 30%

