

BCMA Series

FEATURES

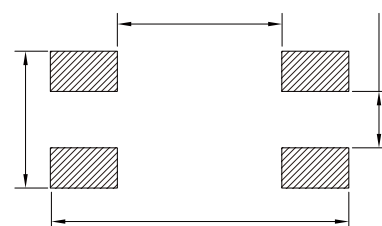
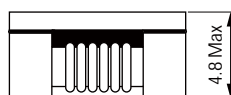
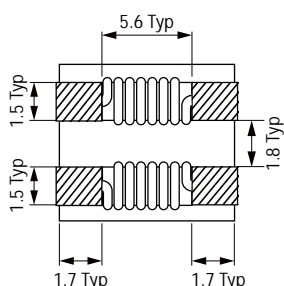
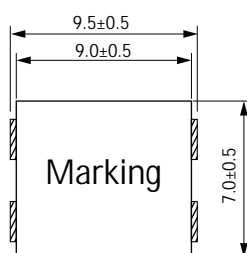
exclusive core is used, so it can be small while maintaining the same features.



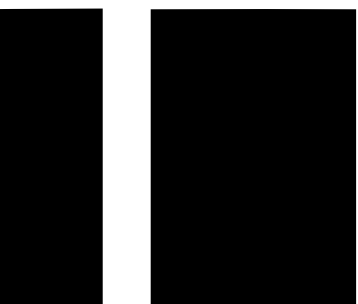
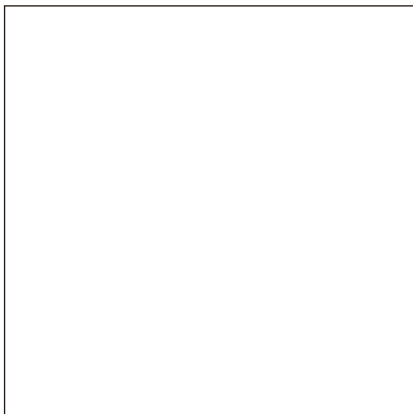
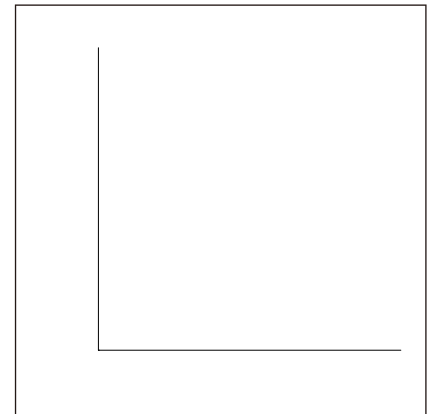
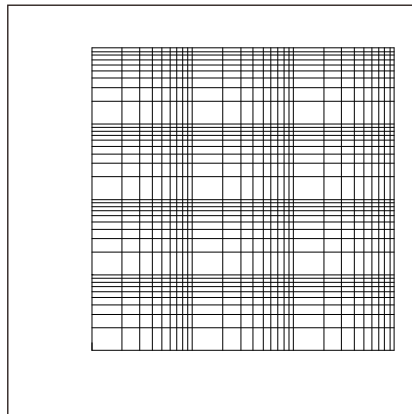
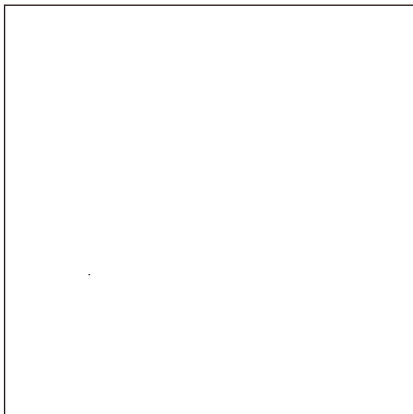
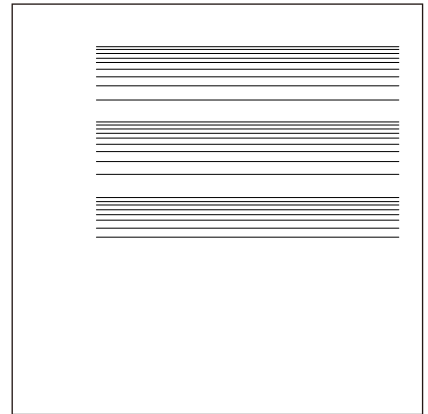
suppressing common mode noise.

APPLICATIONS

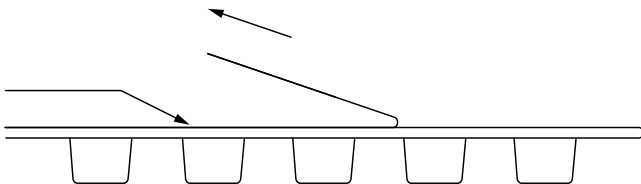
Measures against common mode noise in power lines
various electronic devices



Part No	Impedance Min.	Impedance Typ.	Test Frequency @0.1V	I _R Max.	R _{DC} Max.	V _{DC} Max. (V)	IR Min.
BCMA9070-301Y	225	300	100MHz	6.0	6	80	10
BCMA9070-501Y	450	500	100MHz	5.5	8	80	10
BCMA9070-701Y	500	700	100MHz	5.0	10	80	10
BCMA9070-102Y	750	1000	100MHz	4.0	13	80	10
BCMA9070-152Y	1000	1500	100MHz	4.5	15	80	10
BCMA9070-222Y	1700	2200	20~50MHz	3.0	50	80	10
BCMA9070-272Y	2000	2700	20~50MHz	3.5	32	80	10
BCMA9070-302Y	2500	3000	20~50MHz	1.9	85	80	10
BCMA9070-402Y	3300	4000	20~50MHz	1.8	100	80	10

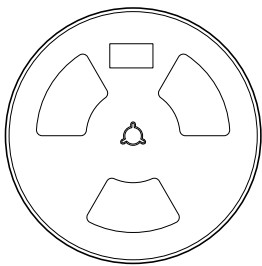
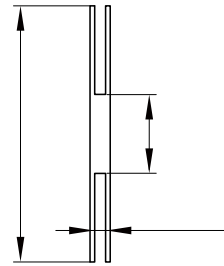
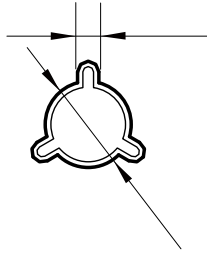
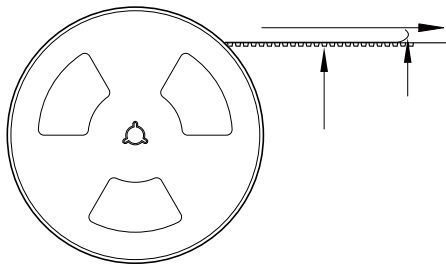


:

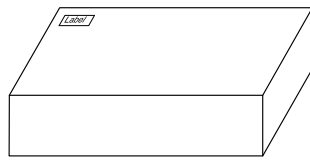


The peel force of top cover tape shall be between 0.10 to 1.17 N

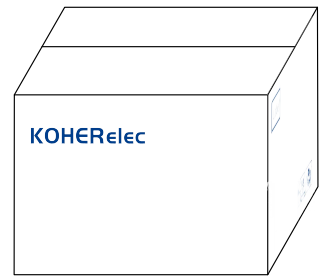
:



800 Pcs/Reel



2 Reel /Inner box(1600 Pcs)



3 Inner box/Carton box(4.8K Pcs)

:

-
-
-
-
-
-
-
-
-